

GN 115.10 | Flush pull handles with lever latch

Zinc alloy



FRONT BODY

Die-cast zinc alloy.

Zinc-plated steel groove for key, screw and elastic washer.

REAR BODY

ABS.

STANDARD EXECUTIONS

- **GN 115.10-DK-1:** triangular groove for key, positioned to the left.
- **GN 115.10-DK-2:** triangular groove for key, positioned to the right.
- **GN 115.10-VK7-1:** square 7x7 groove for key, positioned to the left.
- **GN 115.10-VK7-2:** square 7x7 groove for key, positioned to the right.
- **GN 115.10-VDE-1:** two-wing groove for key, positioned to the left.
- **GN 115.10-VDE-2:** two-wing groove for key, positioned to the right.

Index for handle colour:

- **SW:** RAL 9005 black.
- **SR:** RAL 9006 grey.

KEYS (TO BE ORDERED SEPARATELY)

Die-cast zinc alloy with epoxy resin coating, RAL 9005 black colour, matte finish.

- With triangular groove, GN 119.2-86-DK7-SW (code GN.38701).
- With square 7X7 groove, GN 119.2-86-VK7-SW (code GN 38706).
- With two-wing groove, GN 119.2-86-VDE5-SW (code GN.38711).

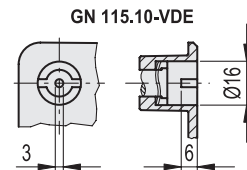
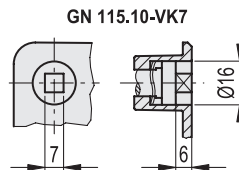
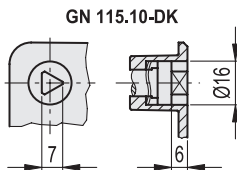
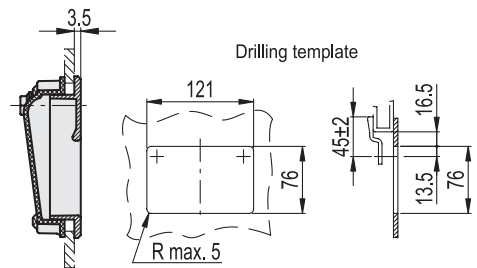
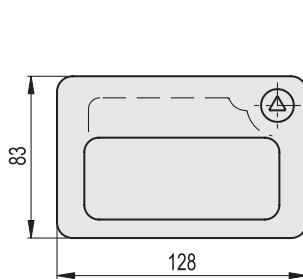
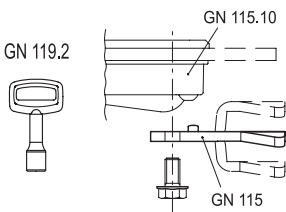
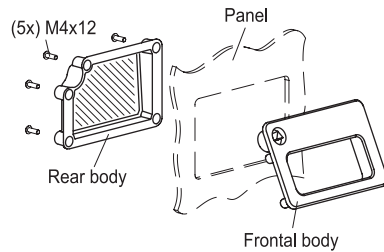
ACCESSORIES ON REQUEST (TO BE ORDERED SEPARATELY)

Closing lever GN 115 (on page 1580), for distances of coupling from 4 to 50 mm.

ASSEMBLY INSTRUCTIONS

Assembly on sheet panels with a max thickness of 7 mm, by means of 5 zinc-plated steel M4x12 screws included in the supply.

1. Drill the sheet panel according to the template dimensions reported.
2. Fit the frontal body of the handle in the panel seat.
3. Assemble the rear body on the back of the panel and press on the back until the complete fitting with the front body.
4. Fit by means of 5 threaded studs.



METRIC

Code	Description	△
GN.39201	GN 115.10-0.1-DK-1-SR	272
GN.39203	GN 115.10-0.1-DK-1-SW	272
GN.39205	GN 115.10-0.1-DK-2-SR	272
GN.39207	GN 115.10-0.1-DK-2-SW	272

METRIC

Code	Description	△
GN.39221	GN 115.10-0.1-VK7-1-SR	274
GN.39223	GN 115.10-0.1-VK7-1-SW	274
GN.39225	GN 115.10-0.1-VK7-2-SR	274
GN.39227	GN 115.10-0.1-VK7-2-SW	274

METRIC

Code	Description	△
GN.39211	GN 115.10-0.1-VDE-1-SR	269
GN.39213	GN 115.10-0.1-VDE-1-SW	269
GN.39215	GN 115.10-0.1-VDE-2-SR	269
GN.39217	GN 115.10-0.1-VDE-2-SW	269



Latches